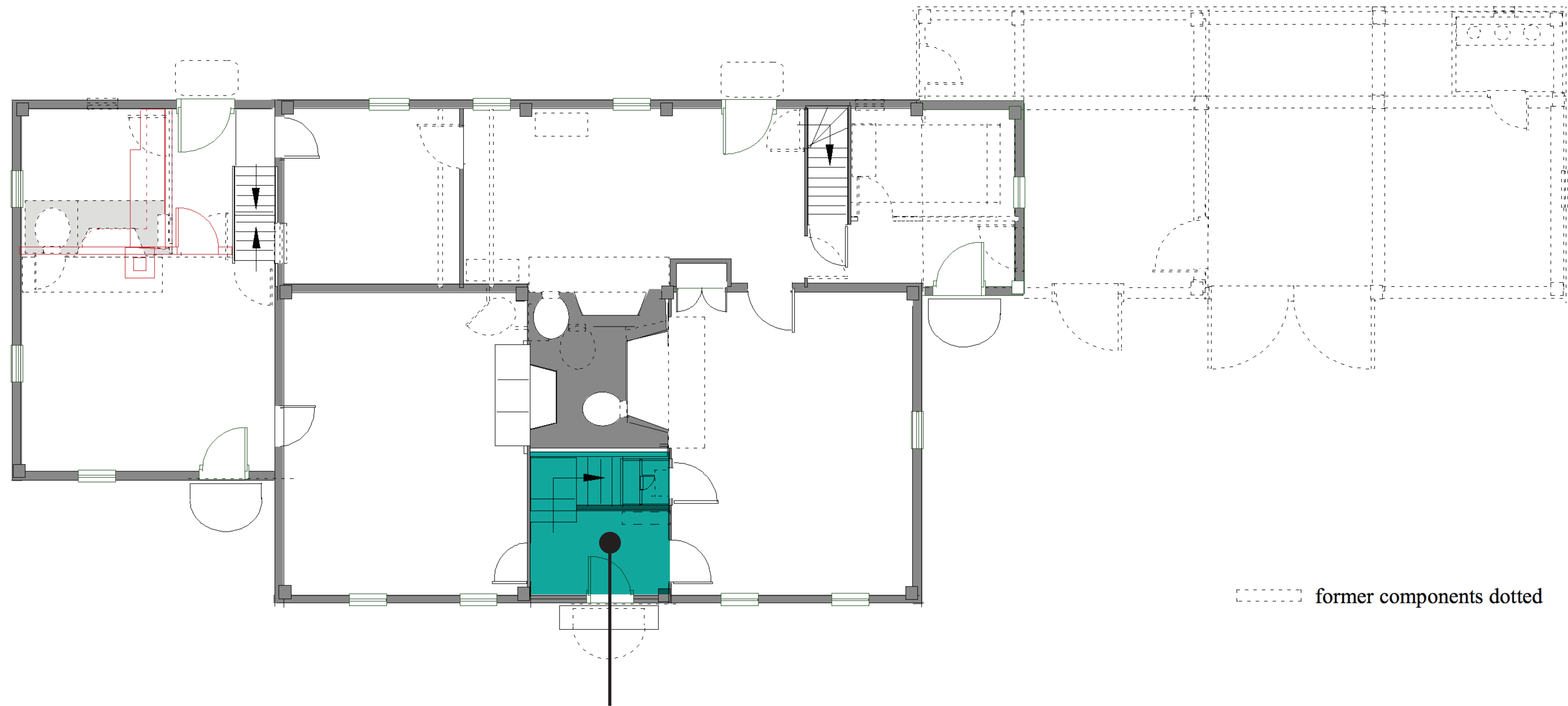


# FIRST FLOOR

## THE ENTRY

terrace above 2'-6" height fieldstone retaining wall

terrace above 2'-6" height fieldstone retaining wall



**Use:** Formal front entry with stairway.

**Original Features:** Wall sheathing, stair balusters, rail.

**Later Alterations:** 20th c. wood floor and composition tile.

**Restorations:** Front doorway.

**Furniture:** Ceramic knobs on stair partitions for hanging pictures, likely Family Crest, possibly "John Adams."

**Finishes:** 18th century gray paint with mahogany painted base boards and handrail.